

Oral & Maxillofacial Surgical Services

Minor Oral Surgery

This includes small surgical procedures on the lips, mouth and teeth. Procedures are usually carried out under a local anaesthetic, (dental injection), whilst you are awake.

Procedures

Biopsy

A small piece of tissue is removed for examination under a microscope to obtain a diagnosis. It takes at least a week to get the result.

The biopsy may remove a small area completely, (excisional biopsy), or partly, (incisional biopsy). There will be a small scar.

Possible Problems

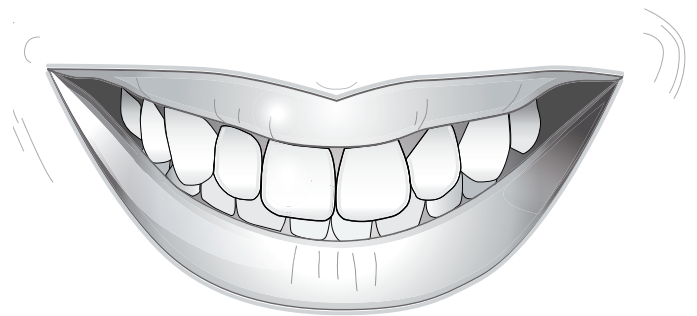
- Occasional bruising or stretching of nearby nerves may cause temporary numbness.
- Rarely, this does not get better.

Removal of difficult or broken down teeth

May involve cutting the gum and drilling away some of the tooth and surrounding bone.

Possible Problems

- Occasional bruising or stretching of nearby nerves may cause temporary numbness. Rarely, this does not get better.
- Small risk of infection in the tooth socket.
- Rarely, damage to adjacent teeth.



Apicectomy

A treatment for infection at the end of the root of a dead tooth that has failed to respond to root canal therapy.

- The gum is cut.
- The infection is cleaned from the bone, and the end of the root is removed.
- The root is sealed with a small filling.
- There will be a small scar on the gum.

Possible Problems

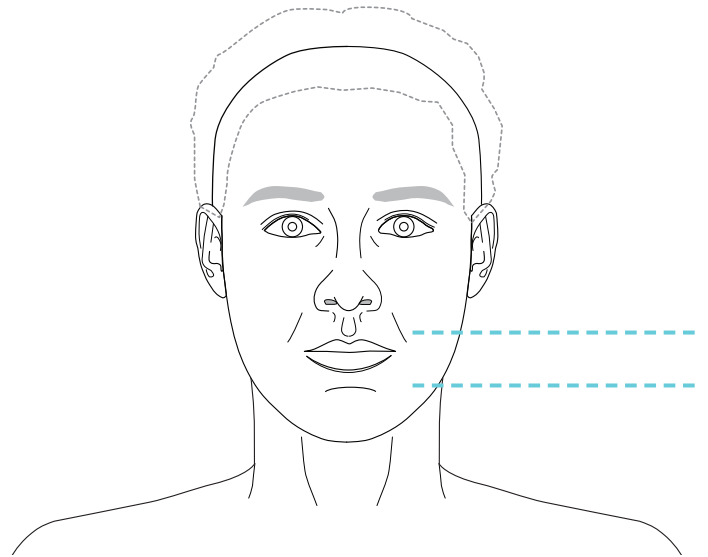
- The gum around the tooth can shrink back. If the tooth is capped (crowned), the margins may become visible and the crown may need replacing.
- Success rate is quite high and best with front teeth.
- Infection may recur and the procedure may need repeating. Sometimes this is not possible and the tooth needs extraction.
- Temporary numbness of the gum. Rarely, this does not get better.
- Rarely, damage to adjacent teeth.

Recovery

- You will experience some swelling, discomfort and bruising which takes 1 - 2 weeks to settle. This is minor with a biopsy and more marked with removal of difficult teeth or apicectomy. Swelling usually increases over the first few days, then gradually settles over the next week.
- Depending on the procedure, you may require a few days or a week off work.
- You may experience some initial discomfort and difficulty in opening your mouth. You will need to take a soft diet or liquidised food until this improves.
- The gum is usually repaired with dissolvable stitches. These sometimes require brushing to remove if they last longer than 2 weeks.

Care instructions

- **You will be given antibiotics**, if necessary, and should use your regular painkillers or those prescribed. Avoid aspirin unless this forms part of your regular medication.
- **Keep the mouth as clean as possible** by brushing gently around the area on the next day.
- **Do not rinse the mouth** for the rest of the day as this may cause bleeding.
- **Have nothing to eat or drink** until the local anaesthetic has worn off, in case you burn or bite your lip or tongue.
- **Rest and do not drink alcohol** for the remainder of the day.
- **If you have bleeding**, roll up a clean handkerchief or clean linen, (do not use tissue or cotton wool), and place over the bleeding site. Apply constant pressure for 15 minutes.
- **Use a mouthwash four times a day**, starting on the day after surgery, for two weeks. In a tumbler of warm water place a teaspoon of salt. Gently bathe the surgical area with the salty water for 30 seconds. Alternatively, use a Chlorhexidine mouthwash (this may temporarily stain the teeth if used for more than two weeks).
- **Do not smoke** until the wound has healed.



Please contact us if you have:

- **Numbness** lasting more than 3 weeks and not improving.
- **Excessive or persistent pain**, swelling, bleeding, or other concerns.

Contact:

University Hospitals of Leicester

Website:

www.leicestershospitals.nhs.uk

Secretary:

0116 258 6953

email:

maureen.mcnab@uhl-tr.nhs.uk

Spire Hospital Leicester

Website:

www.spirehealthcare.com

Secretary:

0116 265 3014

email:

beverley.marlow@spirehealthcare.com

Nuffield Hospital Leicester

Website:

www.nuffieldhospitals/hospitals

Secretary:

0116 274 3743

email:

linda.cummins@nuffieldhealth.com